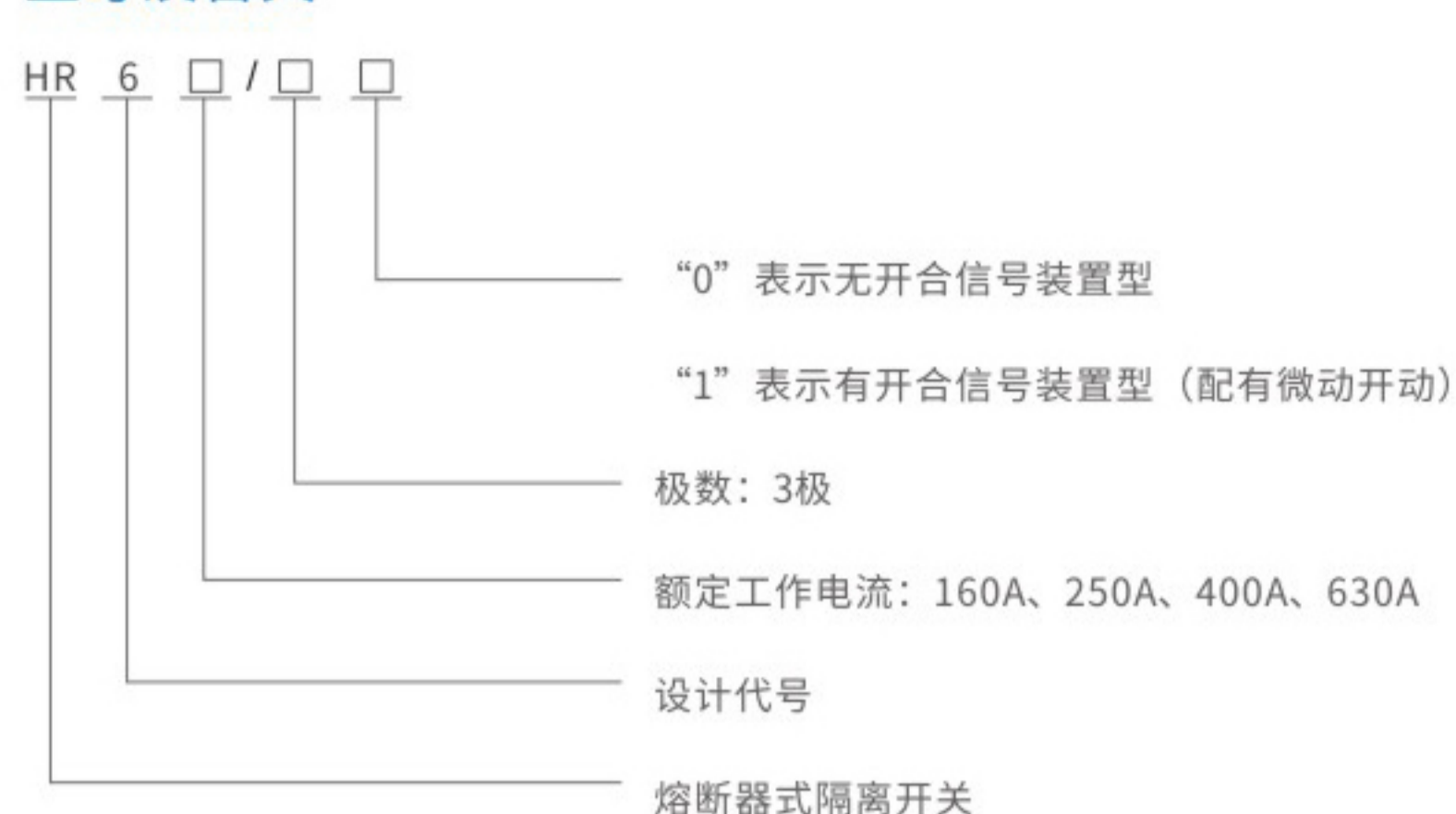


## Overview

The HR6 series fuse type knife switch (hereinafter referred to as the switch) is mainly used in distribution circuits and motor circuits with high short-circuit currents up to 630A, rated AC 400V and 660V (45N-62Hz), as a power switch, isolation switch, emergency switch, and for circuit protection. However, it is generally not used for directly opening and closing a single motor. The switch complies with IEC60947-3 and GB14048.3 standards.

## 型号及含义



## Structural Features

The switch consists of a base, cover, and arc extinguishing chamber, all made of arc resistant plastic and featuring a fully plastic structure. The static contact is directly mounted on the base, and the arc extinguishing chamber is easy to disassemble and assemble. Each arc extinguishing chamber has two parts: an inner chamber and an outer chamber. Multiple metal arc extinguishing grids are used to enhance the arc extinguishing ability and improve the contact life. The NT type fuse link is installed inside the cover, and the cover can rotate in a fan-shaped manner along the support, with a large electrical isolation distance to meet the requirements of the isolation switch. The cover can be easily removed from the base, making installation and replacement of the fuse link very convenient. There are two sets of mounting holes on the base, which can meet the requirements for installation inside various switch cabinets and on panels. On both sides of the switch, auxiliary contacts can be installed as needed to send signals indicating the on/off status of the switch.

## 主要参数

开关与熔断体的配用关系

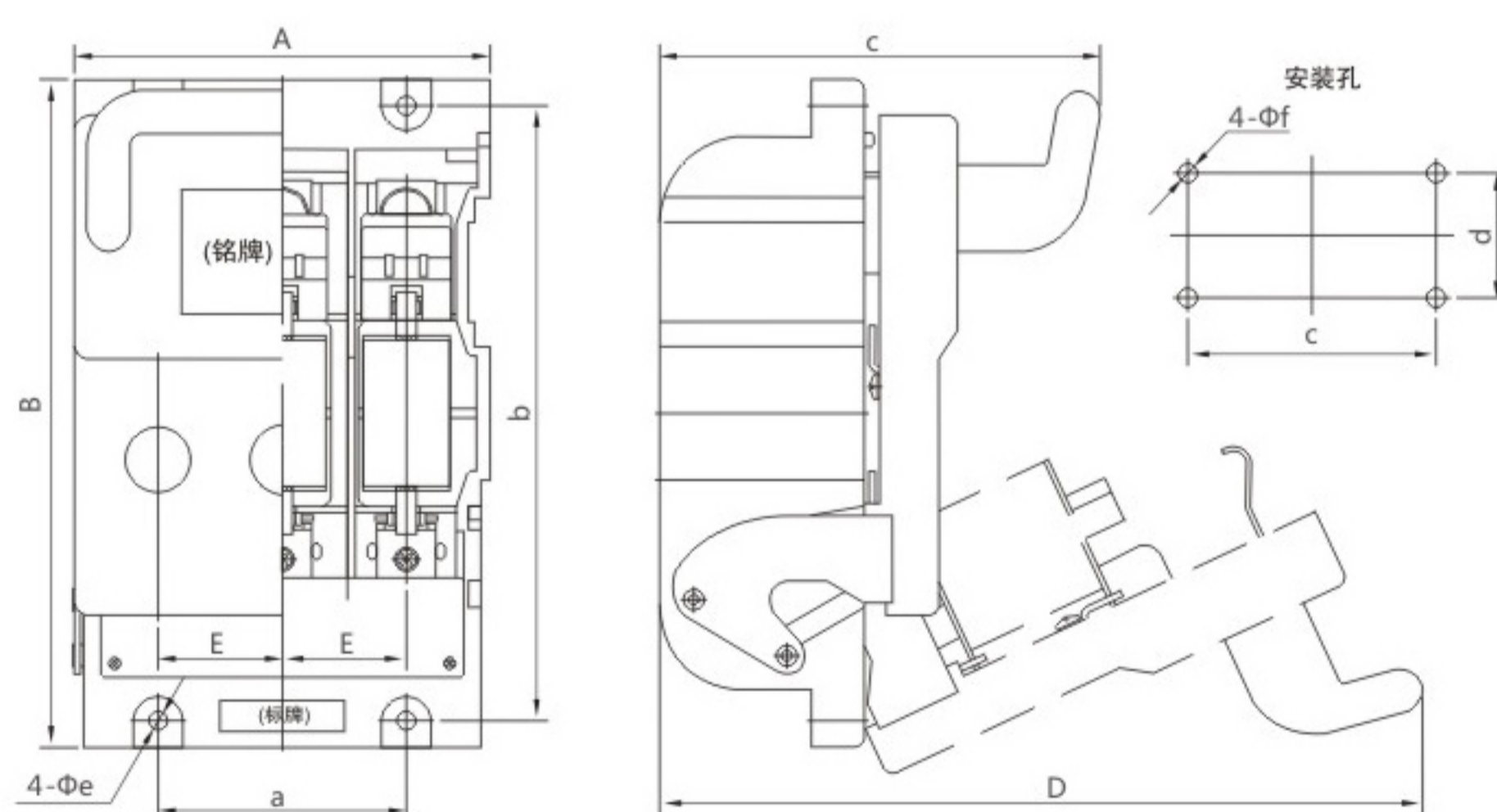
开关约定发热电流(A)	配用熔断体	额定电压(V)	熔体电流值(A)
160	NT00	400	4、6、10、16、20、25、32、40、50、63、80、100、125、160
		660	4、6、10、16、20、25、32、40、50、63、80、100
250	NT1	400	80、100、125、160、200、224、250
		660	80、100、125、160、200
400	NT2	400	125、160、200、224、250、300、355、400
		660	125、160、200、224、250、300、315
630	NT3	400	315、355、400、425、500、630
		660	315、355、400、425

## 开关主要技术参数

型号	HR6-160	HR6-250	HR6-400	HR6-630		
额定绝缘电压(V)	660	660	660	660		
约定发热电流(A)	100	250	400	630		
额定工作电流(A)	400V	160	250	630		
	660V	100	200	425		
额定接通和分断能力(A) (1005Ue时)	400V, COS $\phi$ =0.35 AC-23B	接通	1280	2000	3200	5040
		分断	960	1500	2400	3780
	660V, COS $\phi$ =0.65 AC-22B	接通	480	750	1200	1890
		分断	480	750	1200	1890
额定熔断短路电流(KA)	50	50	50	50		
最大预期峰值电流(KA)	100	100	100	100		
污染等级	3	3	3	3		
安装类别	III	III	III	III		

辅助开关额定电压交流400V,约定发热电流6A,使用类别为AC-15,额定控制容量300VA

## 开关外形与安装尺寸



型号	外形尺寸 (mm)					安装尺寸 (mm)					
	A	B	C	D	E	a	b	c	d	Φe	Φf
HR6-160/30	134	215	142	245	40	80	198	80	40	Φ6.5	Φ6.5
HR6-250/30	184	280	162	320	60	120	260	120	60	Φ8.5	Φ8.5
HR6-400/30	220	300	194	360	72	144	280	144	60	Φ8.5	Φ8.5
HR6-630/30	244	300	194	360	80	160	280	160	60	Φ8.5	Φ8.5